



Surrey Heath Borough Council
Surrey Heath House
Knoll Road
Camberley
Surrey GU15 3HD
Telephone: (01276) 707100
Facsimile: (01276) 707177
DX: 32722 Camberley
Web Site: www.surreyheath.gov.uk

Division: Legal & Democratic Services
Please ask for: Eddie Scott
Direct Tel: 01276 707160
E-Mail: democratic.services@surreyheath.gov.uk

To: All Members of the **EXTERNAL PARTNERSHIPS SELECT COMMITTEE**

The following papers have been added to the agenda for the above meeting.

They were not available for publication with the rest of the agenda.

Yours sincerely

Damian Roberts

Chief Executive

SUPPLEMENTARY PAPERS

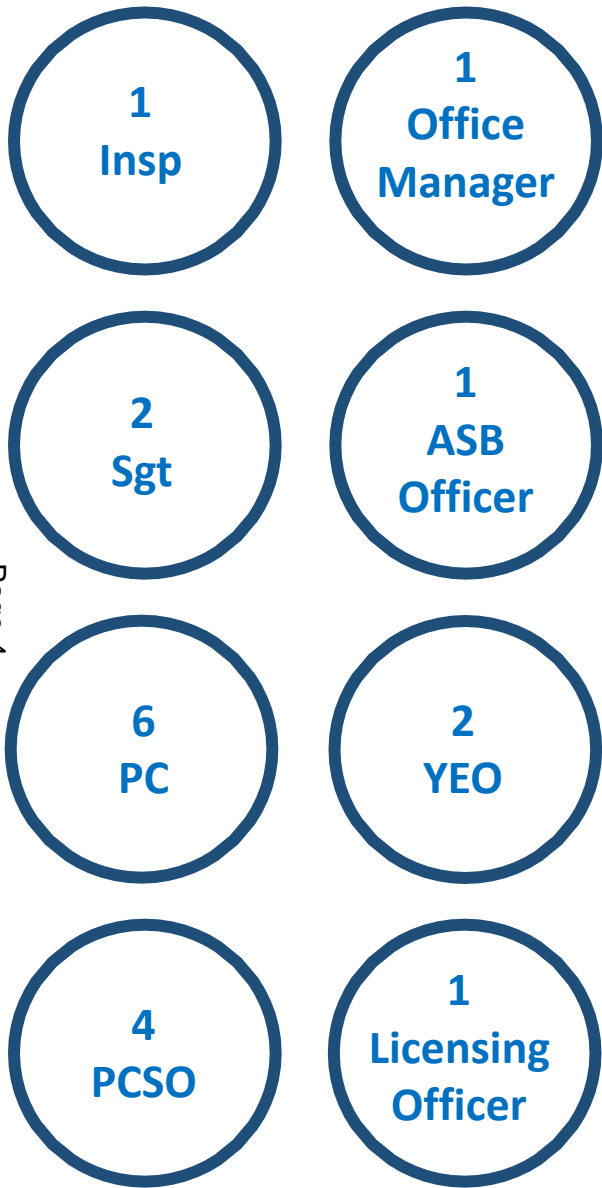
	Pages
7 Surrey Police	3 - 12
To receive a presentation from Inspector Gemma Taylor, Borough Commander, on the recent changes which have affected Policing within Surrey Heath, campaigns and ongoing crime trends.	

This page is intentionally left blank



Surrey Heath Crime and Disorder

Insp Gemma Taylor



- Special Constables
- Volunteers



Surrey Heath Neighbourhood Team



- Problem Solving Advisor
- Data Analyst



- CID
- Safeguarding Unit
- Sexual Offences Investigation
- Intelligence
- Proactive
- Child Exploitation and Missing Team
- Criminal Justice
- Contact Centre
- Custody
- Professional Standards
- Problem Solving Team
- Neighbourhood Policing Team
- Roads Policing
- Dog Section
- Firearms

Surrey Heath Neighbourhood Policing Strategy

• Western Neighbourhood Policing Strategy

- **Engaging with communities** – focussed / considered / planned to use a range of tactical options, tailored to local & national issues. Ensuring we promote community engagement & relations as per the Race Action Plan.
- **Problem Solvers** – to be leaders in solving community problems with partners, categorised into People / Places / Themes.
- **Activity Specifically Targeted** – our work is focussed on local issues and wider towards the divisional performance pillars. Recognition that Neighbourhoods is not a secondary investigation team for teams to utilise.

- **Build Trust & Confidence in Policing** – at the heart of everything we do, acknowledging the wider positive impact this can have.
- **Violence Against Women and Girls** – PREVENT it, make PROGRESS in tackling it, PROTECT people from harm. **45230124069**
- **Race Action Plan** – A police service that routinely involves black people in it's governance. A police service that protects black people from crime and seeks justice for black people. **45230127383**

• Surrey Heath Neighbourhood Policing Strategy

- **Engaging with communities** – per month
 - 1 Meet the Beat style event
 - 1 other engagement event based on themes
- **Problem Solvers** –
 - Identify through People, Groups and Places
 - Utilise partners and volunteers effectively
- **Specifically Targeted Activity** – per quarter
 - Plan 1 activity and agree with Sgt

Quarterly Focus - 2024

Nov – Jan

- Burglary, Vehicle crime, Violence
- Op Sceptre, Op Callibre, White Ribbon Day

Feb – April

- Fraud, Cyber-crime, Drugs,
- County Lines Week, Safer Business – BID Focus

May – June

- Road Safety, DA/VAWG

July – Oct

- ASB, Business, Drugs
- ASB Week, Safer business, CLIW

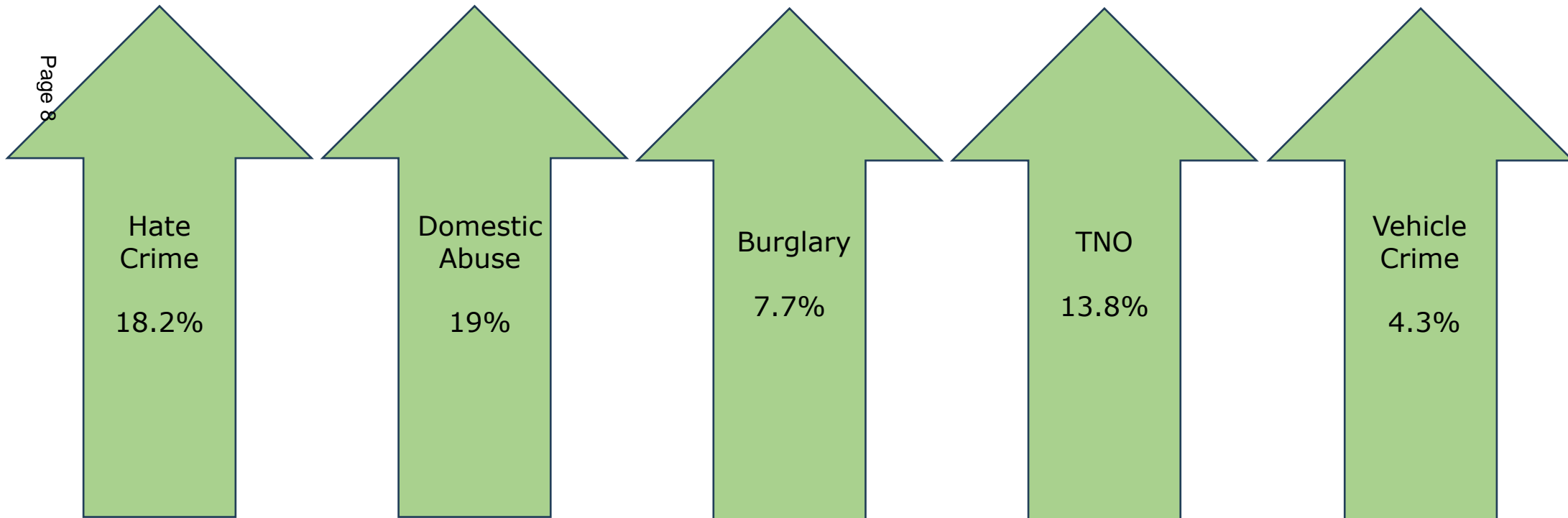
ASB Legislation utilised 01/11 – 01/03

- 13 Community Protection Warnings
- 1 Community Protection Notice
- 3 Partial Property Closure Orders and one extension
- 1 Full Property Closure Order
- 1 Arrest for Breach of Partial Closure Order
- 1 Criminal Behaviour Order
- 2 Arrest for Breaches of Criminal Behaviour Order
- 4 Premises warrants obtained, 2 actioned

Statistics

Last 28 days – 27 less crimes in total
Last 3 months – 2 more crimes in total
Charge rates are up

Page 8



Joint Neighbourhood Survey

Table 1. *Taking everything into account, how confident are you in the policing of your local area? (% very/fairly confident)

	Year End 22/23	Qtr.1 23/24	Qtr.2 23/24	Qtr.3 23/24	FYTD 23/24
Force	82.9%	74.0%	72.5%	72.7%	73.0%
West	84.0%	77.0%	74.2%	72.6%	74.6%
Guildford	85.7%	80.0%	77.6%	69.1%	75.6%
Surrey Heath	82.9%	80.0%	74.5%	79.0%	77.9%
Waverley	81.2%	74.5%	67.3%	70.1%	70.6%
Woking	86.1%	73.5%	77.2%	72.0%	74.2%

Inclusivity, VAWG and the White Ribbon Campaign

1 Woman is killed by a **man** every **3 days** in the **UK**

18% of **all crime** recorded in the England and Wales is **DA**

Year ending March 22, there were **194,683** sexual offences of which **70,330** were rape

Hate Crime and Community Relations as a Result of the War in Gaza

- Record Hate Crime and Non-Crime Hate Incidents
- Hate Crime flags added – faith, sexual orientation, disability etc
- Hate/Anti-Social Risk Assessment (HARA) completed to determine the risk
- HARA reviewed by SNT for problem solving/support and according to risk reviewed by Sgt or Inspector. Wider Community Impact also assessed at this point.
- Inspector reviews at 72hrs, 7 days and 28 days ongoing up to the point of filing and if being filed undetected.
- Repeat Victim policy and Top five offender/victim/ location approach with bi-weekly performance meetings.



Any questions?